

# User Manual

Advanced Charging Holster for  
KYOCERA® DURA XV EXTREME™



Part # AT8480A

[www.advancetec.com](http://www.advancetec.com)



# Index

## Page

## Details

---

2 .....	Description
4 .....	Inserting/Removing Phone
5 .....	Specifitcations
6 .....	Warranty

Congratulations on your purchase of the AdvanceTec Advance Charging Holster the most advanced holster available



### ■WARNING

**This unit is designed for use with mobile phones only. The use of this unit with any other device may result in damage or fire.**



## THE ADVANCE CHARGING HOLSTER DESCRIPTION

Mobile Phone  
Locking  
Mechanism



Mobile Phone  
Charging Ports

Holster  
Charging  
Ports



Fits  
2" belts

### **WARNING:**

**Do not short circuit the contacts on the holster**



## **THE ADVANCE CHARGING HOLSTER DESCRIPTION**

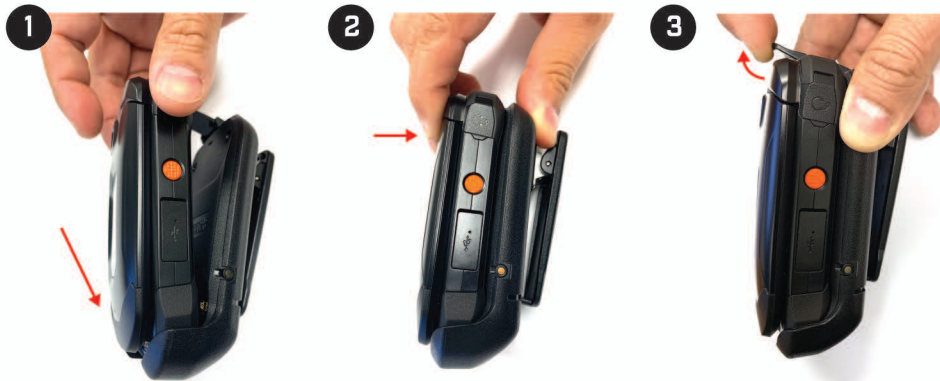
---



### **NOTE:**

**To initiate charging when placing the phone into the holster for the first time or after a long period of time, you will have to press the On/Status button on top of the holster**

## INSERTING AND REMOVING PHONE INTO HOLSTER



1. Insert phone into bottom ridge of the holster.
2. Push phone back into holster until it locks securely into place.
3. To remove phone. Push locking mechanism up, then move phone forward and slide the phone out of the holster.



## SPECIFICATIONS

---

- Holster: Size 2.5" x 4.5" x 3.5"
- High impact VO (flammability ratings) PC/ABS
- Charging Output: 1A
- Charges phone in < 4 hours
- Battery Inside: 2490 mAH

## LED ON PHONE SUMMARY

---

**Solid Red** - Battery Charging

**Solid Green** - Battery Charged

## ■ WARRANTY

---

Your product has a one-year limited warranty from date of purchase against defects in material and workmanship. Under this warranty, you may return a faulty product to AdvanceTec and AdvanceTec will either repair or replace the faulty product free of charge. To return a faulty product for repair or replacement, please call AdvanceTec in the USA at 305-623-3939 to obtain a Return Material Authorization number. If outside of the USA, contact your authorized AdvanceTec dealer for a Return Material Authorization. This warranty covers only defects in material or workmanship in normal use and not damage from negligent handling, misuse, charging of batteries other than those the charger was specified and designed to charge, or lack of proper care.

**Important: Opening of the product will void this warranty.** This warranty gives you specific legal rights. You may also have other rights, which vary from state to state.

OTHER THAN AS EXPRESSLY SET FORTH ABOVE, AdvanceTec Industries, Inc DOES NOT MAKE ANY EXPRESS OR IMPLIED WARRANTIES OR REPRESENTATIONS REGARDING THEIR PRODUCTS. ANY IMPLIED WARRANTIES OF MERCHANTABILITY, NONINFRINGEMENT, AND FITNESS FOR A PARTICULAR PURPOSE ARE EXPRESSLY EXCLUDED AND DISCLAIMED.

**AdvanceTec** will not be liable or responsible for any loss, damage, or injury caused by any failure of its products to operate properly or promptly.



1150 NW 163rd Drive, Miami, FL 33169  
T: 305-623-3939 F: 305-623-3996

---

[www.advancetec.com](http://www.advancetec.com)

